

Supporting Information

青阳参根中一个新的苯二氢化萜型木脂素

李小叁, 龙娟, 罗宇浩, 何妙莹, 吴绮靖, 刘立*, 杨雪梅*

广东医科大学药学院, 东莞 523808

目录

Fig. S1. ^1H NMR spectrum of **1** (600 MHz, CD_3OD)

Fig. S2. ^{13}C NMR spectrum of **1** (150 MHz, CD_3OD)

Fig. S3. ^1H - ^1H COSY spectrum of **1**

Fig. S4. HSQC spectrum of **1**

Fig. S5. HMBC spectrum of **1**

Fig. S6. HR-ESI-MS spectrum of **1**

Fig. S7. IR spectrum of **1**

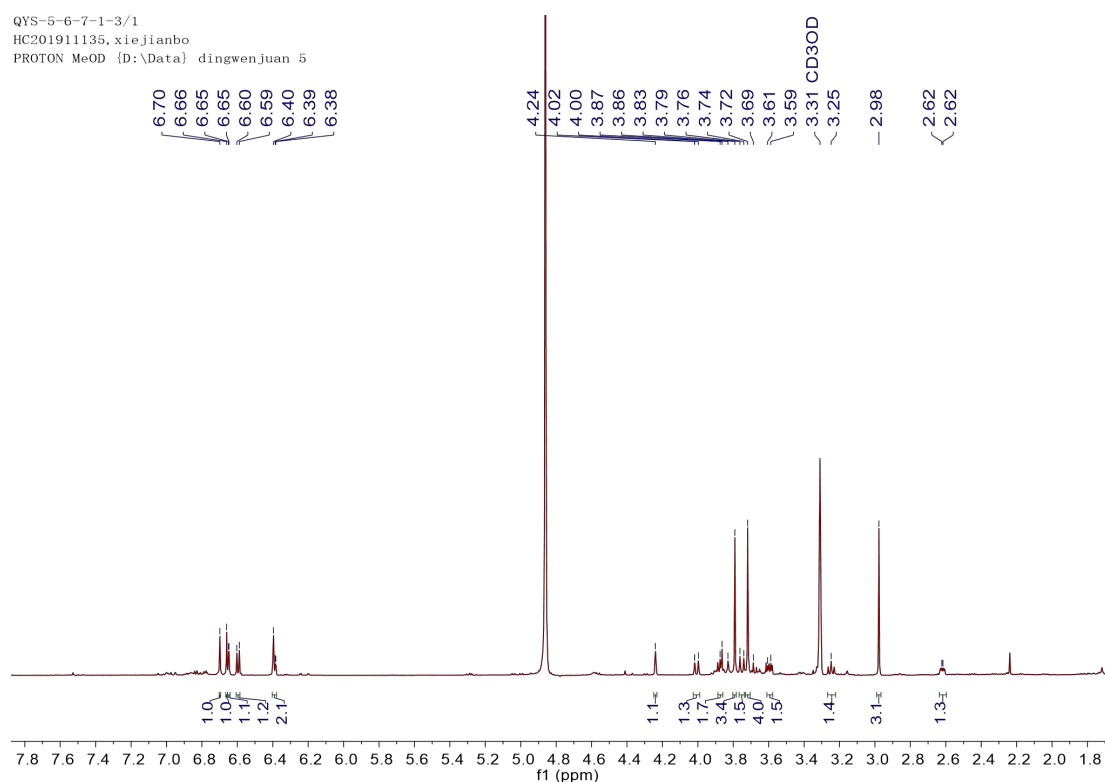


Fig. S1. ^1H NMR spectrum of **1** (600 MHz, CD_3OD)

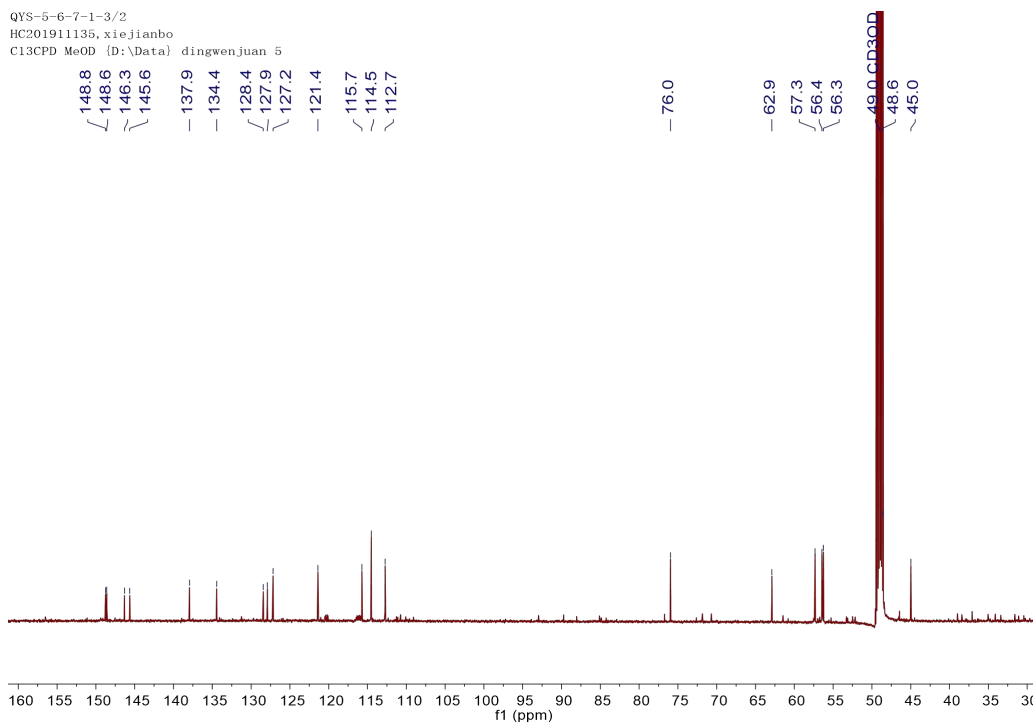


Fig. S2. ^{13}C NMR spectrum of **1** (150 MHz, CD_3OD)

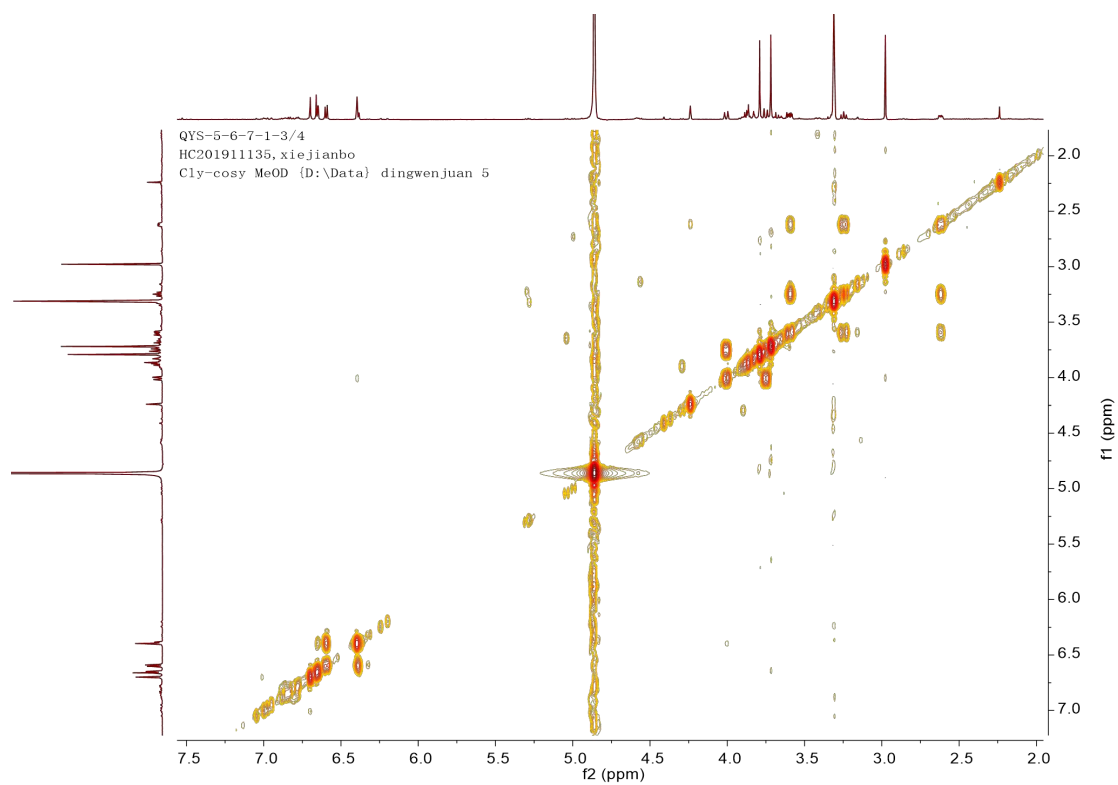


Fig. S3. ^1H - ^1H COSY spectrum of **1**

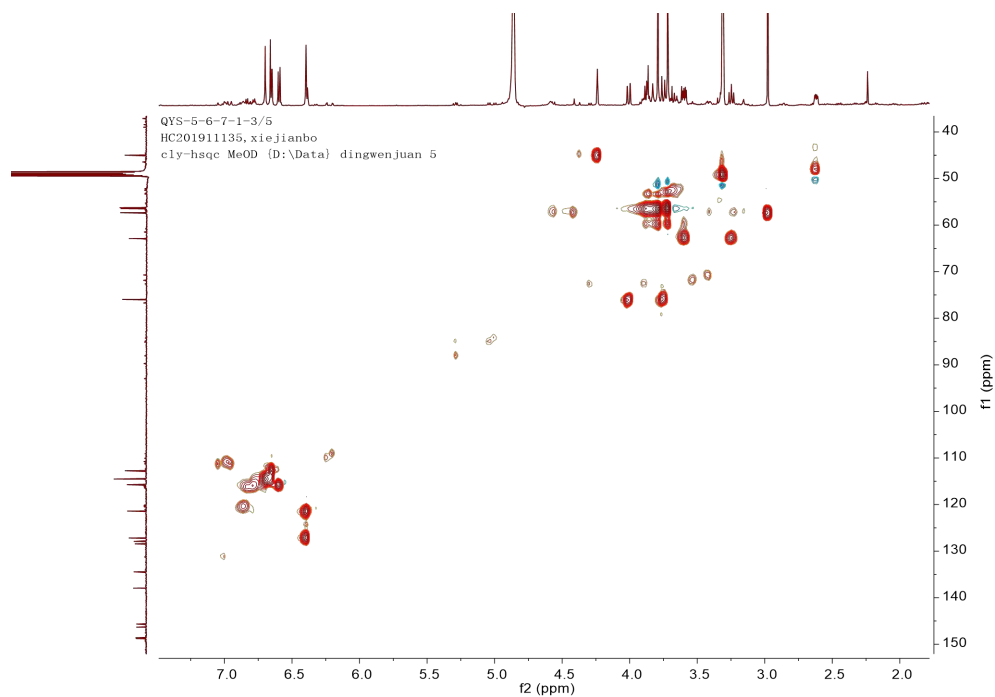


Fig. S4. HSQC spectrum of **1**

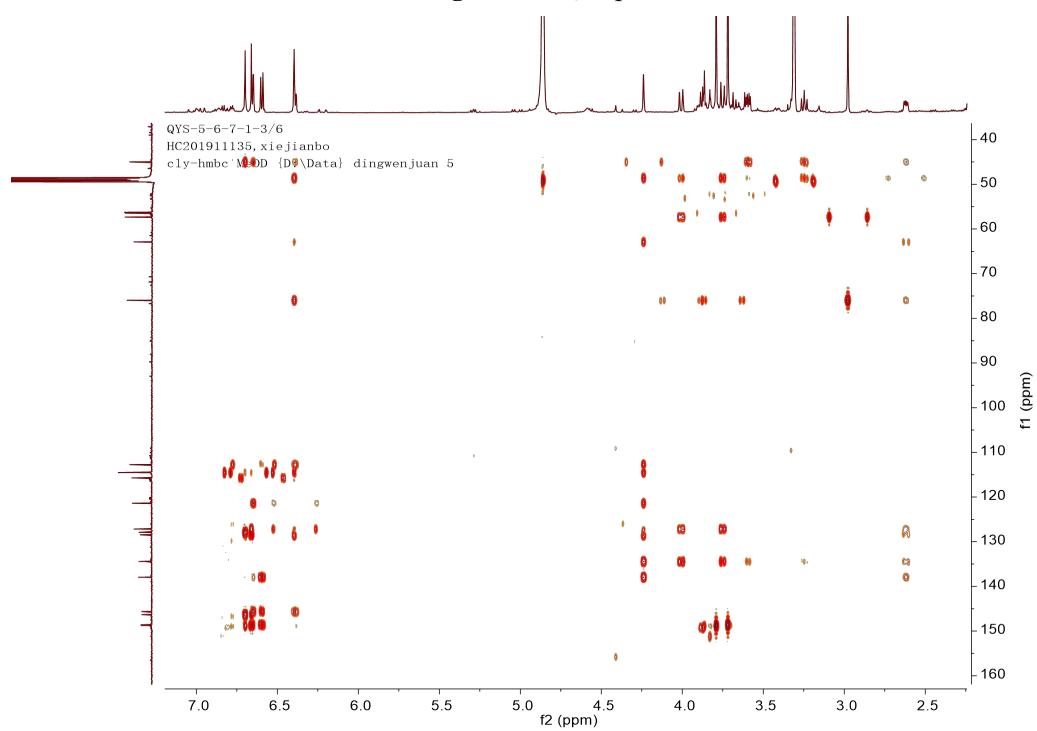


Fig. S5. HMBC spectrum of **1**

Single Mass Analysis

Tolerance = 5.0 mDa / DBE: min = -1.5, max = 50.0

Element prediction: Off

Number of isotope peaks used for i-FIT = 3

Monoisotopic Mass, Even Electron Ions

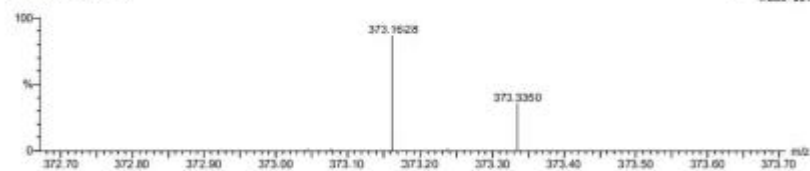
73 formula(s) evaluated with 2 results within limits (up to 50 best isotopic matches for each mass)

Elements Used:

C: 0-500 H: 0-1000 O: 0-20

QVS-56-7-1-3

2021031538 55 (0.457)

1: TOF MS ES+
4.83e+001

Mass	Calc. Mass	mDa	PPM	DBE	i-FIT	Norm	Conf (%)	Formula
373.1628	373.1661	-2.3	-0.2	9.5	26.3	0.324	72.10	C21 H25 O6
	373.1592	3.6	9.6	18.5	29.2	1.294	27.70	C28 H21 O

Fig. S6. HR-ESI-MS spectrum of 1

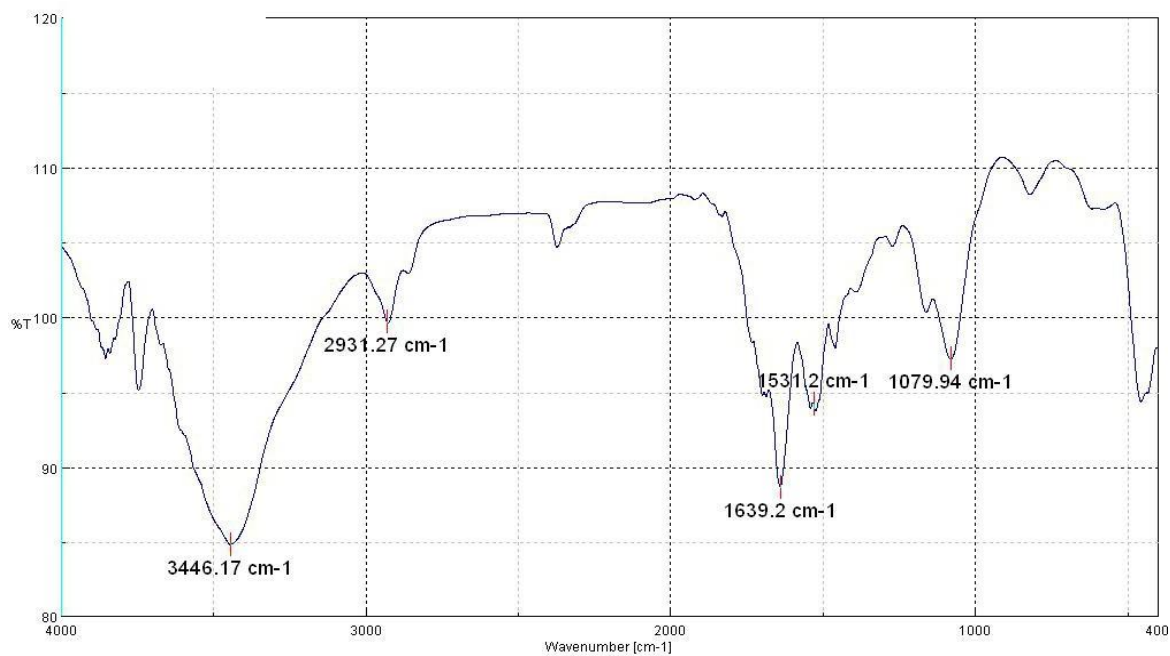


Fig. S7. IR spectrum of 1